

May  
2005

Volume 26  
Issue 5

# Newsletter

## Greater San Antonio Quilt Guild, Inc.



### May 14 Guild Meeting

10:00 AM  
Horizon Church  
6800 Evers

#### Program:

It's Anniversary time. Thirteen people who had a vision formed the Greater San Antonio Quilt Guild 25 years ago. We will celebrate with a program and a light luncheon.

.....  
• Remember to bring to the meeting:

- Nametag (wear it)
  - Library books, videos & patterns
  - Door prize if you won one
  - Block party blocks
  - QPC and Bright Hopes Projects
  - Smiles for your friends
- .....

### 1979 - 2005

It was a wonderful November day when six women gathered to formulate a plan to create a quilt guild for San Antonio. Grace Richardson opened her home for the planning meeting on November 7, 1979. The first official meeting was held on a Saturday in February of 1980 from 2 to 4 P.M. at the Roadrunner Recreation Center, Fort Sam Houston and by April, 181 members has signed up.

On May 3, 1980 bylaws were approved, officers elected and the Greater San Antonio Quilt Guild was born. By the end of 1980 there were 253 members and by 1982 the group had the foresight to become incorporated.

Some firsts include: quilt show in 1981, auction in 1982 (Ethel Howey as the auctioneer), monthly newsletter and annual directory in 1983, retreat in 1988 and much more. To learn about our guild history and thank the remaining founding members be sure to attend the next meeting and our birthday party on May 14.



No presents please! Just come May 14, 2005 and bring a festive mood. After a brief busi-

ness meeting, and shortened guild services (no door prizes) there will be a special program then a buffet salad luncheon. View our guild quilt collection, meet some of the founding members and visit with friends.

We are twenty-five years young and look forward to being part of the greatest quilt revival in our nation's history.

See you at the party!  
Ruth



## Program Notes



### MAY 14

May 14th is party time. 25 years ago, the Greater San Antonio Quilt Guild adapted by-laws. Our program will consist of a look at quilting then, compared to now by Carol Rouse. Then we will share some "reflections" of founding members as well as past presidents and some charter members. If we haven't contacted you and you have a story to share, please call Kitty Janiga or one of the other board members.

The meeting will be shortened, but we will have brief announcements and show and tell (Hold door prizes until next week). Services will be limited to GAAS (auction), Volunteer sign-up for quilt show, summer retreat and brown bag sign-up

We will have voting for the name of the newsletter. You will pick up a ballot as you sign in and there will be a ballot box located on a corner of the stage. There will be the box for block party there also.

Briefly the schedule will be — Business meeting at 10:00 — Program at 11:00 — Lunch at 12:00

### JUNE 11

Brown bag are turned in with the name pin that were made. If you did not sign up last month, there will be another exchange at the May meeting. Bring a few pieces of the fabric you would like in your name pin — pick up a brown bag and return it to the table. At the end of the program, pick up another brown bag.

Make a name pin for the person whose name and fabric is in that bag. We will feature them at the June meeting and vote on the best. You may also make your own name pin and submit it for the vote

### JULY 9

Jan Mueller will be our speaker on "Making the most of Your Quilting by Using Digital Photography"

Jan will combine photography and computer skills to help guide you though photographing your quilts. Many great quilts have not been qualified for a show because of the quality of the photos submitted.

Following the program, there will be a group discussion on taking pictures of quilts using your cameras.

### MEMBERSHIP INFORMATION

REGULAR DUES \$20 SENIOR (over 65) \$15  
Check your Newsletter mailing label for the current expiration of your membership. Send your check with SASE to:  
Gloria Hammond  
12226 Lone Shadow Trail  
San Antonio, TX 78233-2802  
For further information call 695-8737

### NEWSLETTER INPUT

DEADLINE: Midnight Monday after Guild Meeting)  
email to [quiltnews@satx.rr.com](mailto:quiltnews@satx.rr.com) is preferred.  
Or mail -Dea Jae Shore,  
5903 Cypress Bend,  
San Antonio, TX 78247  
210-590-3013

### NEWSLETTER ADVERTISING

Full Page Ad	\$60.00
1/2 page Ad	\$30.00
(Horizontal - 7 x 4 3/4	
Vertical - 3 3/8 x 9 1/2)	
1/4 page Ad	\$15.00
Business Card (2 x3.5)	\$10.00
Full page Insert	\$70.00

### Board Meeting Minutes April 7, 2005

Board Members Present: Ruth Felty, Kitty Janiga, Barbara Gilstad, Mary Mc Carthy, Sylvia Jolet, Dea Jae Shore, Lois Beauchamp and Teresa Tijerina.

President: Ruth called the meeting to order at 5:10. The Board meeting minutes were amended to read: 1st VP for Special Events: Mary requested vouchers for her committees; Unfinished Business: Kitty moved to publish the 2005 Annual Report which will be available at the 2006 meeting; and Ethel Howey's name was corrected. General Meeting minutes were amended to read: The board revised the Calico Rose award; and Community Outreach: Barbara informed all that 6 children's books in our inventory still need quilts. She invited members who are interested in making quilts to compliment these books to stop by her table to check them out. The minutes were approved as corrected.

Ida Blankenship was nominated by Carol Rouse to receive a Calico Rose for her quilting of auction items.

President Pro Tem: Lois, Mary Ruth and Shirley Carter visited the Safetysite storage. Lois moved to purchase a metal heavy duty 42"w x 72"h shelf, Sylvia seconded and the motion passed.

Treasurer: Sylvia will give tax exempt forms to all board members.

Special Events: Mary reported the Auction and Retreat activities are on schedule, she will ask for a volunteer to chair the Boutique, and Barbara Wofford continues work on the Houston trip.

Newsletter: Dea Jae gave an update on the name contest for the Newsletter, ballots will be available at the May meeting. She will post revised rules for the Quilt Show on the Bulletin Board, the 2005 Directory will be distributed at the General Meeting, and her work continues on updating our website.

Programs: Kitty will ask for birthday party volunteers and is planning to have charter members submit "reflections" of years past. Ruth donated 42 blocks that can be signed by members and then made into a 25-year commemorative quilt.

Services: Report deferred. Judith is caring for her ill husband.

Community Outreach: Barbara asked Sylvia 3 questions: 1. When does the fiscal year begin and end? Response: The fiscal year begins in January and closes in December. 2. Why are expenses associated with the current year's budget sometimes subtracted from the next year's budget? Response: When this happens it is because expenses may not have been submitted in a timely manner. In the future please submit approved expenses for the current year to the treasurer no later than the December General meeting. 3. How many volunteer hours are needed for the guild to maintain its status as a nonprofit entity? Lois is currently researching this question.

Old Business: Dea Jae made a zip code map denoting member residency and will display on the Bulletin Board. Ruth said that Shirley Carter, photographer, needs assistance during Bring and Brag. Teresa will announce this at the General meeting.

New Business: Ruth said we can get high visibility by donating a quilt to KLRN Auction. Dea Jae moved a quilt be donated to KLRN, Sylvia seconded and the motion passed. Kitty is making one which she will donate.

The meeting adjourned at 7:10.

Teresa Tijerina, Secretary

---

## GENERAL MEETING MINUTES

April 9, 2005

President: The meeting was called to order at 10:00. Corrections to the minutes were read: Board meeting minutes were amended to read 1st VP for Special Events: Mary requested vouchers for her committees;

Unfinished Business: Kitty moved to publish the 2005 Annual Report which will be available at the 2006 meeting; and Ethel Howey's name was cor-

rected. General Meeting minutes were amended to read: The board revised the Calico Rose award; and Community Outreach: Barbara informed all that 6 children's books in our inventory still need quilts. She invited members who are interested in making quilts to compliment these books to stop by her table to check them out. The minutes stand approved as corrected.

Ida Blankenship's husband has passed away. Amy will e-mail information on funeral arrangements. The Calico Rose this month is given to Ida Blankenship for her contribution of quilting auction items.

Secretary: Teresa asked for volunteers to assist the photographer during Bring and Brag.

Treasurer: February Report - Operating Fund \$5379.29, Reserve \$46,207.10 and Total \$51,586.39. The March Report - Operating Fund \$4709.09, Reserve \$46,248.31 and Total \$50,957.40.

Special Events: Holly showed 2 donated quilts and still has fat quarters for the Quilt Show. Mary Ruth asked for volunteers to make quilts of donated Red Hat fabric. Auction flyers were passed out and members were encouraged to see Amy for extra bookmarks and flyers. Stephanie Martin volunteered to chair the Boutique. Kitty asked members to volunteer and sign up for the Auction. Runners, cashiers, etc. are needed. De Leclair reported a new Quilt Show entry form has been printed and would provide a copy to anyone needing one. Changes have been made for entries of crib quilts and other miscellaneous quilts. Members were reminded to turn in any money collected for tickets, and asked to contact Tess Weaver to volunteer to work at the show. Janet Miller is selling muslin sleeves as a fund raiser. Lois is taking any items for the Silent Auction. Barbara Wofford is the chair for the Houston trip on October 29, the cost is \$43.00 and she will begin selling tickets in June. She asked for volunteers to make lunch bags.

Newsletter: Members interested in participating in the Brown Bag project can see Dea Jae. The Directory can be picked up today, those not picked up will be mailed out. Members were reminded to pick up bookmarks and see the Bulletin Board for some interesting quilting stories and a map of member zip codes.

Programs: Members were reminded of today's program. The birthday party is next month and assistance is needed with serving, clean up, etc. please sign up. Charter members are being asked to write a memorable event or a reflection from the past so that it can be read at the birthday party. Please call Kitty to submit your reflection. The Brown Bag is in June and



Jan Mueller will talk about Digital Photography in July.

Services: Judith Miller's husband is recovering from by pass surgery.

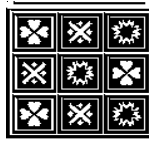
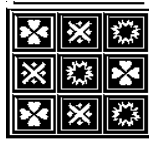
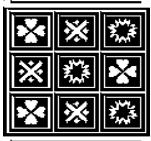
Community Outreach: Lucille Shean announced the Folklife Festival is on June 9-12 this year and asked anyone interested in quilting during the festival to please sign up. Debra Pavelka showed the quilt top and panels for the Children's Shelter "Give a Piece of Your Heart" raffle quilt and stated it will be completed soon. Jean Powell read a letter from Youth Alternatives thanking the guild for a donation of fabric and some clothing. She announced money for the Summer Retreat on June 26 to July 1 is due in May.

Unfinished Business: Members were reminded to visit the Institute of Texan Cultures to view the quilt display, Transcending 9/11: Quilters' Reflections, through May 8.

Teresa Tijerina, Secretary



Peggy Thackson with her Dogwood blossom quilt



## Creative Sewing Center

3/05

### Classes

- Quilting
- Garment
- Kids
- Wearable Art
- Home Dec
- Software
- Embroidery

### Sales & Service

Nothing Sews Like A Bernina. Nothing.

**BERNINA**®

We're at your side.  
**brother**®

Instruction on machines,  
sergers & embroidery products  
purchased at CSC

**Over 5500 bolts  
of 100% cotton  
400 book titles**

11777 West Ave @ Blanco  
San Antonio, TX. 78216  
344-0791

www.sewsanantonio.com  
Mon-Sat. 9:30-6 Sun. 12-5

Present this Newsletter to receive a **10% Discount** on your purchase of regular priced merchandise. We will stamp your newsletter when you use this coupon

## Quilt Show Update

A Garden of Quilts is fast approaching! I would like to thank everyone who has stepped forward to help make our guild show a great event. The committee has been planning a wonderful show and hope that you have many beautiful quilt entries to share. Our team has been working hard handling many details in key areas including Entries, Publicity, Raffle Quilt, Boutique, Silent Auction, Awards Night, Program, Judging, Appraisals just to name a few. There are several areas that I still need help with. Please call me if you are interested, I need additional help with:

Co chair for Volunteers, Special exhibits: Gabrielle Swain Exhibit, Quilt Check in & out.

Any small quilted item for the silent auction would be greatly appreciated by Lois Beauchamp.

I thank you for your dedication and support; I couldn't do it without you.

The quilt show committee has clarified and decided that:

1. The entrant may place multiple entries into the same category should they choose to.
2. The 1600 category will be for Kit & BOM quilts.
3. A 2100 category has been created for Other Quilts (Cathedral window, Crazy Quilts) and Quilts that don't fit into designated categories. A 2000 category for Crib (Juvenile) Quilts.

Thanks, De Leclair

[dequilts@sbcglobal.net](mailto:dequilts@sbcglobal.net)

210-680-3020

8411 Overlook Path, San Antonio, TX. 78249

## Calico Rose Award

The calico rose award gives us an opportunity to recognize a member for dedicated service to the guild that is over and above what is expected. Any member is eligible to place a nomination. We hope you will look at those you work with and take the time to thank them. Board members and officers are not eligible.

The honoree will receive a hand made token (a polymer clay rose pin), to wear proudly so that all can acknowledge their service.

We are providing the following form for your use; however, this form is not required. Nominations may be hand written and handed to Ruth Felty at the meeting or e-mailed to her at: Ruth\_Felty @ msn.com.

## Calico Rose

Ida Tyson Blankenship received the calico rose for April because of her many years of service to our auction. She has quilted many bed size quilts on her Bernina sewing machine and always does a wonderful job. Thank you Ida.

The nomination was placed by Carol Rouse so thank you also.



### CALICO ROSE AWARD NOMINATION

Name of person you want to nominate \_\_\_\_\_

List activity or service in which this person has been involved that you believe to be over and above the call of duty. One brief statement will do!

Name of person making the nomination \_\_\_\_\_

Turn in to Ruth Felty at the meeting or email to: Ruth\_Felty@ msn.com.

## COMMITTEES

<b>ADVERTISING</b>	Barbara Wofford	525-8410	<b>RETREAT-JULY 2005</b>	Allan Jones	733-7483
<b>ARCHIVIST</b>	Sherry Allred	656-0237	<b>RETREAT-JANUARY 2005</b>	Kris Thomson	822-9240
<b>AUCTION 2005</b>	Holly Nelson	830-955-4913	<b>SECRET SISTERS</b>	Charlotte Keener	490-2312
<b>BEE KEEPER</b>	Charlotte Keener	490-2312		Melissa Allo	681-5722
<b>BRIGHT HOPES</b>	Debbie Pavelka	622-0948	<b>STORYBOOK</b>	Barbara Gilstad	493-2404
<b>BRING &amp; BRAG</b>	Nancy Klaerner	655-6184	<b>QUILTS</b>	Mary McCarthy	679-8464
<b>COMMUNITY ED</b>	Betty Tope	696-4138	<b>STYLE SHOW 2006</b>		
<b>DIRECTORY</b>	Dea Jae Shore	590-3013	<b>SUNSHINE &amp; SHADOWS</b>	Mimi Condrey	674-2170
<b>FOLK LIFE FEST</b>	Lucille Shean	696-1879		Amy Cottrell	830-981-8832
<b>HOUSTON BUS</b>	Vacant			Qorg@aol.com	
<b>ITC</b>	Lucille Shean	696-1879	<b>VIDEOS</b>	Shirley Carter	479-4072
<b>LIBRARY-BOOKS</b>	Mary Ruth Flores	694-6059	<b>WEBMISTRESS</b>	Diane(De) Leclair	680-3020
<b>MAGAZINES</b>	Kelly Montgomery	690-3680	<b>WEARABLE ARTS</b>	Ida Blankenship	690-0828
<b>MEMBERSHIP</b>	Gloria Hammond	590-6406	<b>WELCOMING</b>	Doris Patterson	656-0334
<b>MEMBER SVC.</b>	Liz Hooge	342-5976		Carrie Lyons	497-3832
<b>PATTERNS</b>	Patricia Patton	861-3944		Ellie Williams	492-3164
<b>PHOTO</b>	Shirley Carter	479-4072	<b>YOUTH ALTERNATIVES</b>		
<b>PUBLICITY</b>	Mary McCarthy	679-8464		Jean Powell	684-6425
<b>QPC-AM</b>	Loveta Fowler	945-8230			
<b>QPC-PM</b>	Carol Rouse	699-9363			
<b>QUILT SHOW 2005</b>	Diane (De) Leclair	680-3020			
<b>QUILT-IN</b>	Jean Powell	684-6425			
	Carla Schladoer	684-1160			

# QUILTERS SHOW CALENDAR

May 7 Airing of the Quilts On the Square, downtown Huntsville, Texas

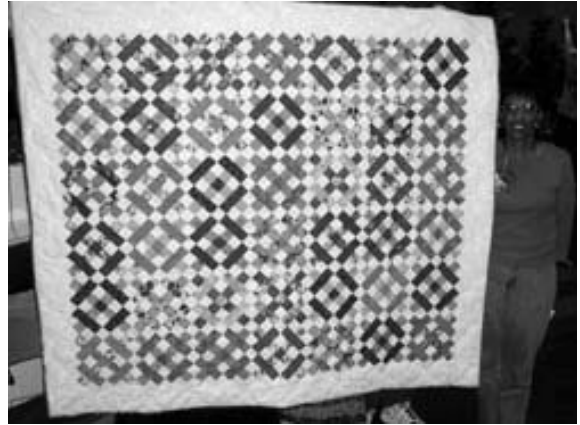
Thru May 8 Transcending 9/11: Quilters' Reflections at the Institute of Texan Cultures, San Antonio, Texas

June 3-5 Stars Over Abilene, Abilene Civic Center, Abilene, Texas



## Newsletter Naming Contest

The board has picked 5 names from the many wonderful and creative entries. You may pick up your ballot as you sign in to the May meeting. Be sure you put the marked ballot in the basket before you leave. The winner will be announced in the newly named newsletter in June!



Renee Bradley's Washington Pavemet



Gundy Cleven's Memory Quilt



### Memories by the Yard

210-520-4833

[www.memoriesbytheyard.com](http://www.memoriesbytheyard.com)

#### Upcoming Events:

Spring is coming and things are blooming here at the shop with lots of classes and fun events!

April 15 Forever flowers Block of the month available Hurry in - limited kits available

May 8 Mother's Day Bring in you wish list for family members looking for gift ideas

*Store hours: Monday-Friday, 10-7*

*Saturday, 9-4*

*6816 Huebner Rd., San Antonio*

*On Huebner at Bandera, next to Tuesday Morning*

### Ledenham Sewing Machine Co.

Sales, Service & Parts



Cecil & Peggy  
Owners

**elna**+

(formerly located in Joske's)  
2107 Vance Jackson  
San Antonio, Texas 78213

**732-6309**

Office & Fax



# Community Outreach Update

## Texas Folklife Festival – June 9-12, 2005

Guild members have another golden opportunity to share their quilting expertise with the greater San Antonio community. If you missed hearing all about quilting at the Institute of Texan Cultures during their 34<sup>th</sup> Annual Texas Folklife Festival, please contact **Lucille Shean, Chair, Folklife Festival Committee**. She will answer your questions and fill you in on all the pertinent details. Lucille would dearly love to add your name to her growing list of volunteers. So let her know just as soon as possible which day(s) you are available and the time(s) during which you would like to quilt. Join the fun by demonstrating our guild's love of quilting while enjoying each others' company. You are guaranteed a great time!

## Bright Hopes

"A big **Thank You** to all of the people that worked on Blocks and Panels for the "Give a Piece of Your Heart" Raffle quilt. By the time we have our May Meeting, we should know how much the quilt raised as well as the entire benefit. This event is the major fund raiser for The Children's Shelter and we are pleased to be a part of it. The last 2 years the Guild received national attention for our participation. Thank you again for all your help and understanding of what were sometimes very short time limits. The following people worked on the quilt: Sylvia Jolet, Bernis Farris, Mary McCarthy, Molly Martinez, Dea Jae Shore, Glenna McKandles, Sonja Vaught, Valerie Archment, Judith White, Patti Centeno, Holly Nelson, Carol Bryant, Judith Miller, Charlotte Keener, Louise Bishoff, Ida Blankenship, Carrie Lyons, Arminda Lopez, and Dawn Paoletti. Bernie Farris quilted the Quilt for us. Thank you again.

**Debra Pavelka, Chair, Bright Hopes Committee"**



## Youth Alternatives

Thank you, Jean Powell, for reading the letter of appreciation we received from Teresa Huerta, Administrative Assistant, and Kristy Hernandez, Program Director, Roy Maas' Youth Alternatives, Inc., thanking guild members for their donations of fabric and clothing for residents at The Bridge. If you have any questions about Youth Alternatives, please contact **Jean Powell, Chair, Youth Alternatives Committee**. As our community liaison, Jean gladly accepts your donations of sewing/quilting supplies, clothing, as well as personal hygiene and household items, for Youth Alternatives.

## Storybooks and Quilts to Go

Since we announced that we still had storybooks needing quilts, there has been an explosion of interest generated. Kris Thomas, Debra Pavelka, Donnis Todd, and Dea Jae Shore signed up to make 4 storybook quilts last month. And this month three more guild members stepped forward. Gundy Cleven signed up to make a quilt for Eight Hands Round. Quilt of Dreams captured Larry Beauchamp's interest. And Patchwork Tales intrigued Sandra Retzloff. In addition, Mary Ruth Flores retrieved two children's quilt-related storybooks from donations and offered them to the Storybook and Quilts to Go project. Thank you all for your support. And remember, books continue to be added to our inventory throughout the year as donations are made and new ones are published. Who knows, you may find one of the children's stories irresistible, too.

**Barbara Gilstad, Chair, Storybooks and Quilts to Go Committee.**



The  
QUILT  
HAUS

Quality fabrics, notions,  
books, patterns, and gifts.  
Quilting classes & groups.  
[www.quilthaus.com](http://www.quilthaus.com)

New Braunfels MarketPlace  
651 N. Business 35, #510  
New Braunfels, TX 78130  
(830) 620-1382

Monday-Saturday  
9:30am -5:30pm  
Sunday 12 - 5pm  
Deanne Quill



*Uncle Sidney's Tuscon Ties by Joyce Efron*



*Dawn Paloletti's embroidery*



*Kolodzie Harper's 3D Pinwheel and her Star Cluster below*



*Melissa Allo's Basket Quilt*

## The fun of Bring and Brag



*Mary Ann Flynn's Scrap slanted Star*

### GSAQG Quilts at Frost Banks

Many of you may not know that our guild has been displaying quilts at Frost Bank locations for the past 6 years. This community educational project was initiated by a request from the bank and has been faithfully managed by Markay Chaney all these years. Initially quilts were displayed in the lobbies of 3 locations and were selected to reflect the seasons of the year. Currently the locations being used are the Citizens branch at 4715 Fredericksburg (at Loop 410) and the North branch at 1250 NE Loop 410 (at Nacogdoches).

Markay has taken a well-earned retirement from this project this spring and I have assumed responsibility. The quilts are changed every 3 months as the seasons change. When you are in the vicinity, be sure to stop by and see the 2 spring quilts currently being shown.

I will need 2 quilts with fall colors or themes to hang in Sept. Large wallhangings or bedsize quilts are most suitable for the display spaces we have available. If you have one you would like to share with the community for the fall months, please give me a call. This is a wonderful opportunity to share our love of quilts with the general public.

Susan Bradley  
830 755-4577



*Karen Nanos Blended Pastels*

I want to thank those of you who sent cards, floral offerings and calls following the death of my husband, Bill, on March 9, 2005. I've always known that GSAQG is a family but was overwhelmed by the caring and sympathy offered by so many. My heartfelt thanks to all. **Sherry Allred**



## Bright Hopes Committee Chair: Debra Pavelka

A Greater San Antonio Guild activity since 1989, the Bright Hopes committee collects small quilts on behalf of The Children's Shelter. The Children's Shelter consists of several charitable services providing care and shelter to children in crisis and at-risk. Most of the quilts gathered are distributed to infants of school-age mothers.

At a kit making party, donated fabrics are cut thirty-six inches by the width of the fabric and paired in coordinating sets. Batting from large rolls is cut to the appropriate size. All of these are put into a zip closure bag. A hank of crochet thread, yarn, or embroidery floss and a special label are added to complete the kit. Kit making parties are usually held at Hope Lutheran Church, 410 & Callaghan, and include a lunch supplied by the chairman. The next kit party will be Monday, June 6 from 9 - 1. "The more the merrier" so plan to attend - you'll be glad you did!

Once kits are put together, they are brought to every guild meeting, ready for checking out from the Bright Hopes table. Anyone can take a kit. The sewing is easy and no binding is required if you follow the pillowcase method. Because they are small and assured of a home, these quilts are great for practicing quilting stitches, hand or machine. However, keep in mind that these quilts will receive a lot of hard use so be sure to quilt or tie sufficiently to keep the batting from shifting.



On average, twenty to thirty quilts are collected each month. Some of the bees contribute on a regular basis. Each Bright Hopes quilt earns the guild two hours of community service. Last year this committee racked up 1107 hours, 868 hours making quilts and 239 hours of committee work.

A special feature for the past two years has been the making of a quilt to be raffled at The Children's Shelter's annual fundraising event, "Give a Piece of Your Heart". This year's quilt features paper pieced houses and appliquéd flowers in country colors. It is hoped this quilt will surpass last year's result of \$1810.00.

Debra Pavelka has chaired the Bright Hopes committee for two years. She is grateful to all the bees and members who have sewn quilts, donated fabric, batting, thread or otherwise helped this committee. She encourages all guild members to participate in this worthy undertaking and assures them the quilts will provide needed comfort. Stop by the Bright Hopes table and see what you can do.

### **GRANDBY'S QUILTS**

#### **and Spare Time Threads**

opens newest location in Bulverde  
Hill Country Center  
at Borgfeld Rd & Hwy 281

(210)490-7813 for directions

**MACHINE QUILTING & PIECING  
QUILTS READY TO BUY RIGHT OFF  
THE RACK  
GIFTS FOR THE SEWING ENTHUSIA-  
ST**

**20% OFF any item in stock  
with this original ad**



## 2005 Greater San Antonio Quilt Guild Judged Show Rules

*"A Garden of Quilts" September 16, 17 & 18<sup>th</sup> 2005*

1. **General Information:** Entry forms and fees will be accepted at guild meeting or by mail to: Janet Miller: 16942 Hidden Oak Woods, San Antonio, TX 78248-1423 Tele: 492-7684
2. **Entry Deadline:** July 16, 2005
3. Send a color photograph, and a SASE with your entry form. Photos are for identification and planning purposes only. Write your name and quilt title on the back of the photograph. (Work in progress photos are accepted.) The entrant is responsible to insure their entry. Every effort will be made to assure your entry's safety. Neither the Chairpersons, GSAQG, Inc. nor Live Oak Civic Center management can be held liable for loss or damage to your entry.
4. **Delivery point:** Live Oak Civic Center: Tuesday, September 13<sup>th</sup>, from & 7:00AM -11:00 AM. It is the responsibility of the entrant to ensure their entry arrives by the specified time.
5. All entries must be available for judging and display from Tuesday September 13<sup>th</sup> through September 18<sup>th</sup>. No quilts will be removed prior to 6:00 pm, September 18<sup>th</sup>, 2005.
6. The quilt must be labeled in a bottom corner of the back of the quilt, and must include the name of the quilt and the quilt maker(s). The label must be covered during the judging portion of the show. All garments and miniatures must be labeled.
7. Bed quilt entries must have a 4" sleeve stitched securely to the quilt. Place the bottom edge of the sleeve no more than 90" from the bottom of the quilt. If the quilt is shorter than 90", place the sleeve at the top of the quilt. Wall hangings will require a 2" sleeve across the top of the quilt. Quilts will not be displayed without a sleeve.
8. No rigid frames, mounting devices or special lighting may accompany the quilt.
9. A maximum of 4 entries will be accepted per person. The Challenge is considered a separate competition and should not be counted as one of the 4 entries.
10. Judged entries are not limited to guild members.
11. Items previously judged in a GSAQG show will not be accepted for judging.
12. The judged show committee reserves the right to re-categorize the entry, and reserves the right to limit the display of distasteful items.
13. First, second, third and honorable mention awards will be given in assigned categories. All awards may not be given in each category, dependant on the quality of the entries. Special awards include: Best of Show, Viewers Choice, Judges' Recognition, Founders' Award and Color award.

### **100 Bed Quilt Appliqué/ Hand Quilted:**

1. Quilt must be at least 72" on the longest side, and not less than 40" on the shortest side.
2. Top construction is predominantly appliqué.
3. All quilting must be by hand.
4. The quilt must be the work of one person.

**200 Bed Quilt pieced/Hand Quilted:**

1. Quilt must be at least 72" on the longest side, and not less than 40" on the shortest side.
2. Construction technique is predominantly pieced.
3. All quilting must be by hand.
4. The quilt must be the work of one person.

**300. Bed Quilt machine quilted/ Individual:**

1. Quilt must be at least 72" on the longest side, and not less than 40" on the shortest side.
2. Any construction technique is acceptable.
3. The majority of the quilt must be machine quilted.
4. Quilt must be the work of one person.

**400 Bed Quilt Mixed Technique:**

1. Quilt must be at least 72" on the longest side, and not less than 40" on the shortest side.
2. Top must contain a balance of two construction techniques (piecing & appliqué).
3. Any quilting technique is acceptable.
4. Quilt must be the work of an individual.

**500 Two Person Quilt:** (Non-professional)

1. Any construction and quilting technique is acceptable.
2. Any size is acceptable.
3. Two people must make the quilt. Non-professional
4. Professionally quilted quilt must be entered into the professionally quilted category.

**600 Group Quilt:**

1. Any construction and quilting technique is acceptable.
2. Any size is acceptable.
3. Three or more people must have participated in the construction of the quilt top.
4. Professionally quilted pieces are acceptable in this category.

**700 First Quilt**

1. The entry **must be the First quilt entered in a formal quilt show.**
2. Any size or construction technique is acceptable.
3. Quilt must be the work of an individual.

**800 Miniatures**

1. **Piece must be 25" or less on the longest side. (Max 25 x 25) Entries must be in a scaled proportion to the size of a whole quilt.**
2. Any construction and quilting technique is acceptable.
3. Miniature Novelty techniques are accepted: These include crazy quilting, Yo-Yos, etc

**900 Art Quilts**

1. The piece must show artistic/studio design concepts. The emphasis being on line, color and design. The category features abstract and cutting edge works.
2. The piece is the original work of the maker.
3. Any construction and quilting technique and or surface techniques are acceptable.



**1000 Show Chair's Theme**

1. An explanation of the theme's interpretation must accompany the entry form. Limit to 25 Words.
2. The quilt should visibly relate to the show theme, "**A Garden of Quilts.**"
3. Workmanship will be a factor in judging, however, the prime emphasis will be the extent the entry depicts the quilt show theme.
4. Any size quilt is acceptable.
5. Any construction and quilting technique is acceptable.

**1100 – 1400 Wall Hangings:** *(Wall hanging category will be sub-divided into appliqué hand quilted, pieced - hand quilted, mixed technique & individually machine quilted.)*

1. The piece must be intended to hang on the wall.
2. Construction technique is indicated by category.
3. Professionally quilted quilt must be entered into the professionally quilted category.

**1500 Professionally Quilted :**

1. Quilt may be any size.
2. Any construction technique is acceptable.
3. The quilt is hand or machine quilted by another person for a fee.

**1600 Kits /BOM:**

1. Any quilt made from a kit (purchased pattern with pre-selected fabrics) or Block of the Month pattern (From shops , mail order or magazine etc.).
2. Any size is acceptable.
3. Professionally quilted pieces are acceptable in this category.

**1700 Wearable Art**

1. The piece must be intended to be worn as a garment.
2. The piece must be constructed using piecing or appliqué.
3. The quilting technique (hand/machine) is the choice of the maker.
4. Novelty techniques are accepted: These include crazy quilting, Yo-Yos, etc.

**1800 Juniors**

1. The quilt must be made by child under the age of 18.
2. Any construction or quilting technique is acceptable.
3. Limited adult help is acceptable.

**1900 Challenge**

1. Challenge fabric must be easily identifiable within the piece.
2. Size requirements 200 inches maximum perimeter measurement.
3. The piece must be a finished quilted item and be the work of an individual.
4. Any technique or combination of techniques is acceptable.

**2000 Crib/ Juvenile**

1. Quilt is intended for use by a baby or child.
2. Any technique or combination of techniques are acceptable.
3. Hand or Machine quilted is acceptable.

**2100 Other**

1. Quilts that do not fit criteria of other categories: White on White, Yo-Yos, Crazy quilts etc.

**2200 Display only quilts** 1. Quilts not being judged must be entered in this category. Entrant may request critique.

Due by July 16, 2005

Official Use Only

- Self-Addressed/Stamped Envelope
- Completed entry form and color photo for **each** entry
- Appropriate fees

Category: \_\_\_\_\_

Quilt #: \_\_\_\_\_

**Greater San Antonio Quilt Guild Judged Show  
 "A Garden of Quilts" September 16, 17 & 18, 2005**

Section 2: Placement Categories

Section 1: Entry Identification

Entrant's Name: \_\_\_\_\_

Address: \_\_\_\_\_

City: \_\_\_\_\_ State: \_\_\_\_\_ Zip: \_\_\_\_\_

E-mail: \_\_\_\_\_

Area Code/Phone: \_\_\_\_\_

Title of Entry: \_\_\_\_\_

Size: (W) \_\_\_\_\_ (L) \_\_\_\_\_ (inches) Year Completed: \_\_\_\_\_

Maker's Name: \_\_\_\_\_

Quilter's Name: \_\_\_\_\_

Pattern Source Credit: \_\_\_\_\_

Kit or Block of the Month? Yes: \_\_\_\_\_ No: \_\_\_\_\_

Is the quilt available for sale? Yes \_\_\_\_\_ \$ \_\_\_\_\_ No: \_\_\_\_\_

Quilt's Story: Please limit to 25 words or less. We reserve the right to edit for clarity and length. \_\_\_\_\_  
 \_\_\_\_\_  
 \_\_\_\_\_

- 100 Bed/Applique/Hand Quilted
- 200 Bed/Pieced/Hand Quilted
- 300 Bed /Machine Quilted
- 400 Bed /Mixed Technique
- 500 Bed /Non -Professionally quilted
- 600 Group Quilt
- 700 First Quilt
- 800 Miniatures
- 900 Art
- 1000 Show Chair Theme
- 1100 Wall Applique Hand Quilted
- 1200 Wall Pieced Hand Quilted
- 1300 Wall Machine Quilted
- 1400 Wall Mixed Technique
- 1500 2-Person Professionally - Quilted
- 1600 Kit/ BOM
- 1700 Wearable Art
- 1800 Juniors
- 1900 Challenge
- 2000 Crib/Juvenile
- 2100 Other/ Miscellaneous
- 2200 Display only Quilts

Section 3: Hold Harmless Agreement

I understand that all entries must be available for judging and display from Tuesday September 13 through Sunday 18<sup>th</sup>, 2005. I agree to allow the GSAQG to photograph my entry for files, publicity and promotional purposes. I understand that every effort will be made to protect my entry. Neither the chairpersons, GSAQG, INC. nor Live Oak Civic Center can be held liable for loss or damage to the entry.

Signature of Entrant: \_\_\_\_\_

Date: \_\_\_\_\_

**Section 4: Delivery and Pick-up**

- I plan to deliver my entry in person.
- I plan to deliver my entry UPS/USPS/FedEx.
- I plan to pick up my entry in person
- I authorize \_\_\_\_\_ to pick up my entry.
- I require my entry to returned UPS/USPS/Fed Ex.

Shipping Arrangements  
 Contact Janet Miller (210) 492-7684  
 rhaemmerle@satx.rr.com

**Section 5 Fees \* Limit of 4 entries accepted \***

Make checks Payable to **Greater San Antonio Quilt Guild**  
 \$6.00 per entry. Total: \$ \_\_\_\_\_

**Mail entry form to:** Janet Miller, 16942 Hidden Oak Woods, San Antonio, TX 78248-1423

## *Sunshine & Shadows*

Ida Tyson Blankenships's husband, Alan, died on Friday, April 8. Our deepest sympathies to Ida and to her family.

Please share your happy news and sad news with us so that we may support you, our member. Milestone birthday? Anniversary? New Grandchild? New Graduate? New job? Promotion? Good Hair Day?

If you have any news you want published, please email [qorg@aol.com](mailto:qorg@aol.com) or call Amy at 830-981-8832.



De Leclair with her Best of Show Quilt in Dallas.  
Way to go, De!!!



## **Guild Storage**



We are preparing to clean out the storage room of unused, unneeded stuff. If your committee has stuff here, would you please contact me need to know exactly what you want saved. Things do accumulate, I know! Lois 561-0719 or [leb@satx.rr.com](mailto:leb@satx.rr.com). Thanks a bunch!



### *Kalico & Keepsakes*

*Quilt Shop*

*Longarm Quilting*

*Sylle, Texas 78052*

*14945 Main/P.O. Box 329*

*(830)772-4721*

*[www.kalicoandkeepsakes.com](http://www.kalicoandkeepsakes.com)*



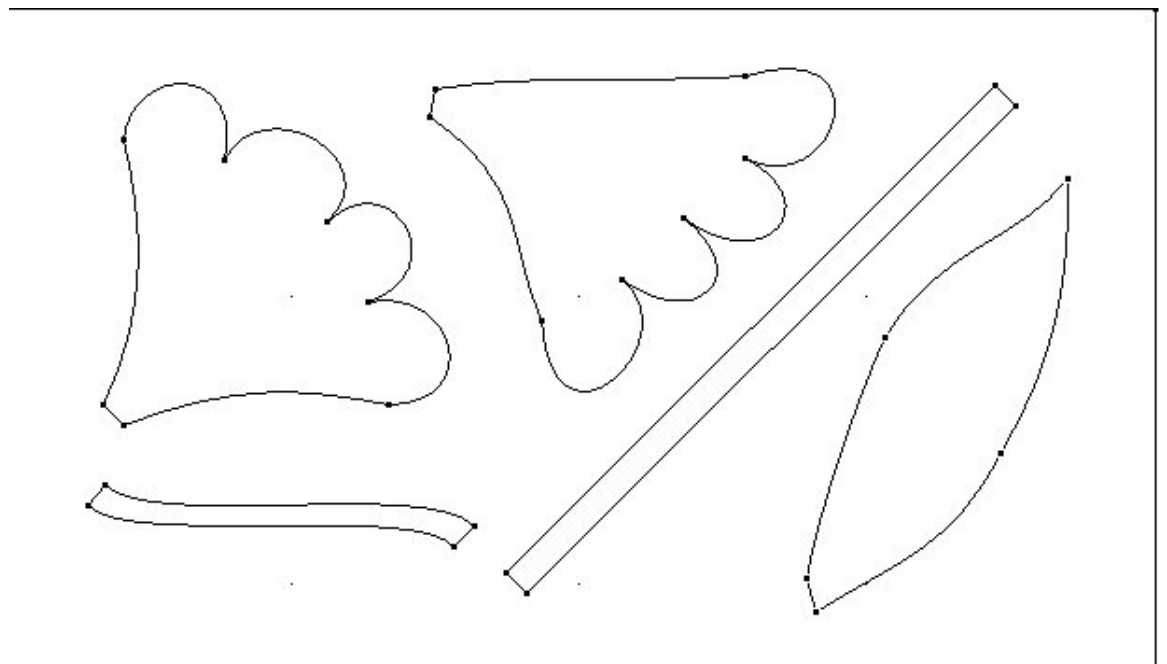
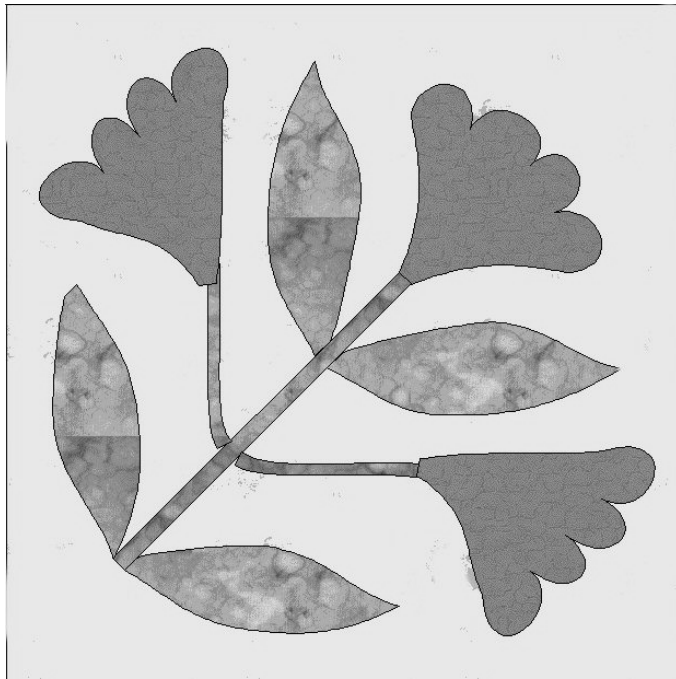
# June 2005

# BLOCK

# PARTY

Bring as many as you like with your name attached to each one. All names go in the basket and the lucky winner in the drawing gets all of the blocks.

For a little change of pace, we will try an applique this month. Any type of applique is acceptable. The background should be a light pastel and leaves a soft green. The color of the flowers are your choice but should also be soft. The templates should be the correct size. The block should be 6" x 6" finished.



**GSAQG**

**P.O. Box 380522  
San Antonio, TX 78268**

**Phone 210-695-8737**

**www.sanantonioquilt.org**

Nonprofit Org. U.S. Postage Paid San Antonio, TX Permit No. 3572
---

**Please Deliver by  
May 6**

---

## **May Schedule**

**May 12 BOARD MEETING-5 PM**

Home of Ruth Felty  
14127 Gertrudes

**May 14 GUILD MEETING-10AM**

Horizon Church 6800 Evers Rd.  
end of Evers Rd. --Just west of Huebner

**May 17 - Wearable Arts 6:30pm**

Creative Sewing Center  
11777 West Ave.

Hostess - Ida Tyson Blankenship

**May 17 - Quilt-In 9am-12**

Cavender Buick Room IH-10 West  
Contact Jean Powell

**May 19 - QPC-AM 10am-4pm**

Alamo Stitchin Post  
Hostess - Loveta Fowler  
656-6700

**May 19 - QPC-PM 6pm-8pm**

Hancocks 7046 Bandera Rd  
Hostess - Carol Rouse  
699-9363

---

## **Board of Directors**

President Ruth Felty, 688-2288

**President Pro-Tem**

Lois Beuachamp, 561-0719

**1st Vice President for Special Events**

Mary McCarthy 679-8464

**2nd Vice President for Newsletter**

Dea Jae Shore, 590-3013

**3rd Vice President for Programs**

Kitty Janiga, 622-9522

**4th Vice President for Services**

Judith Miller, 497-3794

**5th Vice President for Comm. Outreach**

Barbara Gilstad, 493-2404

Secretary, Teresa Tijerina, 256-2664

**Treasurer,** Sylvia Jolet, 497-3383

Parliamentarian

Sherry Allred 656-0237

**Bold Offices expire December 2005**